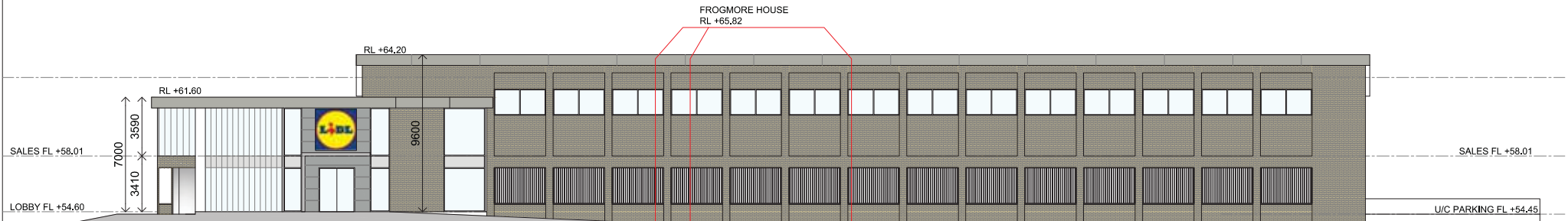
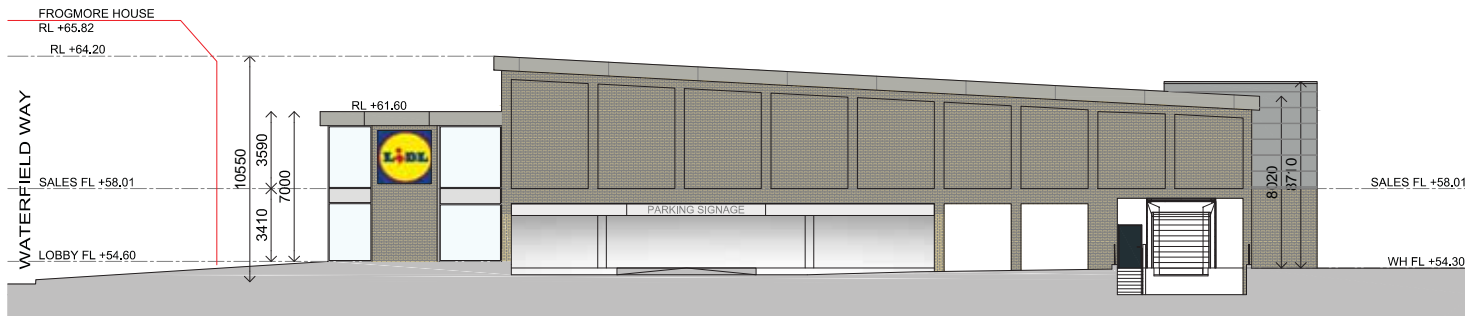


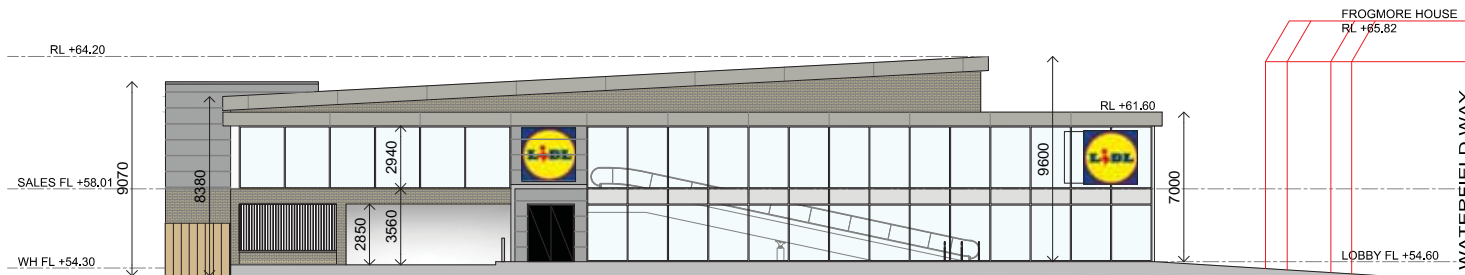
WEST ELEVATION



EAST ELEVATION



SOUTH ELEVATION



NORTH ELEVATION

D	27.04.17	Amended to client's comments	AW
C	05.04.17	West elevation wall finishes revised. Building location updated.	SG
B	23.03.17	External plant area moved. Utilities pool added	SG
A	08.03.17	Ridge height revised.	SG
REV	DATE	DESCRIPTION	BY

IN CASE OF QUOTE OR DISCREPANCY PLEASE REFER TO ARCHITECT FOR INSTRUCTIONS.
DRAWING AND SUITABILITY NUMBERS IN ACCORDANCE WITH BS1192:2007.
THIS DRAWING IS UNLESS NOTED OTHERWISE.
THIS DRAWING IS COPYRIGHT.

SUITABILITY NUMBER KEY:

WIP	Work in Progress**	DOCUMENTATION - SIGN OFF	
SHARED		A - Fit for construction	B - Fit for construction, with comments
S1	Fit for co-ordination**	S2	Fit for information
S3	Fit for internal review and comment	S4	Fit for construction approval
D1	Fit for costing	D2	Fit for tender
D3	Fit for contractor design	D4	Fit for manufacturer/ procurement
		AB - As Built	FC - Final Construction
		** For internal pre-issue usage only.	** For model file usage only.

4th Floor, Greyfriars House
Greyfriars Road, Cardiff CF10 3AL
Tel: 029 2055 8000 Fax: 029 2039 9592
www.boyesrees.co.uk

Registered office: As above Reg No 595 1883 (England & Wales)

PROJECT TITLE:
Proposed Lidl store at Lower High Street, Watford, WD17 2HX

DRAWING TITLE:
Proposed Elevations - Option 2 Internal Ramp

DRAWN BY: SG SCALE: 1:250 @ A3
JOB NO: 5644 DATE: 13.12.16

SUITABILITY:	SO	REVISION:	D			
PROJECT	ORIGIN	VOLUME	LEVEL	TYPE	DISCIP	NUMBER
5644	BR	V01	00	DR	A	020100

Copyright © 2016 Boyes Rees Limited. All rights reserved. No part of this drawing may be reproduced without the prior written consent of Boyes Rees Limited.